

Veterinary

Contents

Veterinary Record

April 18, 2015, vol 176, pp 395-420

VETERINARY RECORD is published by BMJ on behalf of the British Veterinary Association. It was founded in 1888 by William Hunting, ICVS.

Veterinary Editor-in-Chief
Alexander Trees

Clinical Research Editor
Eleanor Raffan

Editorial Board

Stephen Baines, Julie Fitzpatrick, Annette Gunn-Moore, John Innes, Hayne McIlwraith, Richard Martin, Iris Oura, Chris Proudman, Stuart Reid, Susan Rhind, Randolph Richards, Kenneth Simpson, Polly Taylor, James Wood

Editor

Martin Alder

Managing Editor

Zanne Jarvis

Copy Editor

Thryn Clark

Editorial Staff

Ira Feetham, Gill Harris, Manuela Herrera, Sara Honey, Georgina Mills

communications for the editorial department should be addressed to:

Editor

Veterinary Record, BMJ, BMA House, 11, Tavistock Square, London WC1H 9JR

020 7387 4409

020 7383 6418

editorial@bva-edit.co.uk

For information about Veterinary Record and its sister journal, In Practice, can be found on the Veterinary Record/In Practice website at: bvapublications.com

Subscription rates

Individual: Print and online £396

Online only £324

For details of US \$, Euro and institutional subscription rates, please visit the Veterinary Record website at <http://veterinaryrecord.bmj.com/site/about/Subslanding.xhtml>

Subscription requests to:

Order Services

BMA House, 11, Tavistock Square, London WC1H 9JR

020 7383 6270

020 7383 6402

support@bmj.com

Unfilled advertisements should be sent to:

Record Careers

BMA House, 11, Tavistock Square, London WC1H 9JR

020 7874 7067

recordjobs@bmj.com

Any advertisement queries should be sent to:

Editor

020 7768 880410

enquiries@bmj.com

British Veterinary Association, 042 - 4900

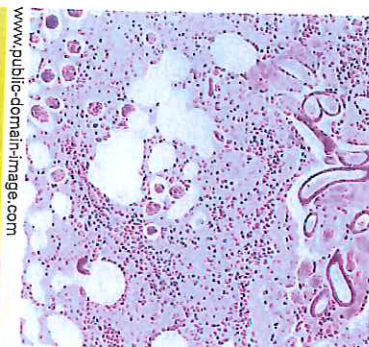
This week's issue



Dilemmas resulting from veterinary progress discussed at BSAVA congress, p 400



British Bee Veterinary Association takes wing, p 404



Prevalence of ovine pulmonary adenocarcinoma in a slaughterhouse in the UK, p 413

396 Comment

396 How far should you go?

397 News and Reports

397 Members appointed to disease surveillance board

397 Review of responsible dog ownership in Wales

398 Taking the plunge for PetSavers

399 Plans for a new centre to focus on extensive livestock production in Wales

400 We can – but should we?

401 Delegates vote on ethical dilemmas

403 Dog breeders in the modern age

404 Bee vets get busy

398 News in Brief

405 Surveillance

405 APHA disease surveillance report for December 2014

409 Research

409 Milk somatic cell counts and pregnancy rates in dairy cattle (I. M. Sheldon)

411 Effect of signs of oestrus, disease stressors and cow activity on pregnancy rate following artificial insemination (I. Beker and others)

412 In vitro assessment of aiming bias in the frontal plane during orthopaedic drilling procedures (T. Sparrow and others)

413 Glyphosate surfactant herbicide poisoning in domestic animals: an epidemiological survey (C. Cortinovis and others)

413 Prevalence of ovine pulmonary adenocarcinoma (Jaagsiekte) in a UK slaughterhouse sheep study (C. Cousens and others)

414 Research Digest

415 Books

416 Viewpoint

416 Compassion and diversity: are we getting it right? (P. Jones)

418 Gazette

419 Letters

419 Silos in education are the main barrier to collaboration (K. McGinn)

419 Approach to issuing animal test certificates for veterinary medicines (J. Braidwood)

420 TB testing (D. Chennells)

Vet Record Careers

i Mentoring support for students

ii Diary of a poultry intern