

IN PRACTICE is published by BMJ on behalf of the British Veterinary Association. It is published 10 times a year.

Articles are commissioned and written in the form of 'opinionated reviews'. All clinical articles are peer-reviewed.

**Clinical practice editorial board**  
Stephen Baines, Aiden Foster, Mark Hillyer, Ellie Mardell, Jelena Ristic

**Practice management advisory group**  
Nick Blayney, Rita Dingwall, Peter Gripper, Ewan McNeill

**Veterinary Editor-in-Chief:** Alexander Trees

**Editor:** Adele Waters

**Managing Editor:** Suzanne Jarvis

**Editorial staff:** Olivia Azouaghe, Laura Honey, Georgina Mills

All communications for the editorial department should be addressed to:  
**The Editor** In Practice, BMJ, BMA House, Tavistock Square, London WC1H 9JR, UK

T: +44 (0)20 7387 4409

F: +44 (0)20 7383 6418

E: [inpractice@bva-edit.co.uk](mailto:inpractice@bva-edit.co.uk)

**Annual subscriptions**

Individual: Print and online £240, Online only £196.

For details of US\$, Euro and institutional subscription rates, please visit [inpractice.bvapublications.com/site/about/Subscription.xhtml](http://inpractice.bvapublications.com/site/about/Subscription.xhtml)

Subscription requests should be sent to: Customer Services, BMJ, BMA House, Tavistock Square, London WC1H 9JR, UK  
T: +44 (0)20 7383 6270, F: +44 (0)20 7383 6402, E: [support@bmjgroup.com](mailto:support@bmjgroup.com)

**Advertising**

Display advertisement queries should be directed to: Kevan Bowen, T: +44 (0)7768 880410, E: [kbowen@bmjgroup.com](mailto:kbowen@bmjgroup.com)

In Practice is published by BMJ Publishing Group Ltd (BMJ), a wholly owned subsidiary of the British Medical Association, on behalf of the British Veterinary Association (BVA).

In Practice follows guidelines on editorial independence produced by the World Association of Medical Editors and the code on good publication practice of the Committee on Publication Ethics.

In Practice is intended for veterinary professionals and is provided without warranty, express or implied. Statements in the journal are the responsibility of their authors and advertisers and not authors' institutions, BMJ, the BVA or the BMA unless otherwise specified or determined by law. Acceptance of advertising does not imply endorsement.

To the fullest extent permitted by law, BMJ and the BVA shall not be liable for any loss, injury or damage resulting from the use of In Practice or any information in it whether based on contract, tort, or otherwise. Readers are strongly advised to verify any information they choose to rely on.

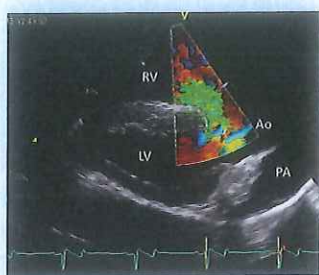
Copyright ©2016 British Veterinary Association  
All rights reserved; no part of this publication may be reproduced, stored in a retrieval system, or transmitted in any form or by any means, electronic, mechanical, photocopying, recording, or otherwise without prior permission.

In Practice is published by BMJ Publishing Group Ltd, and printed in the UK on acid-free paper from sustainable forests by Warners Midlands, Bourne, UK.

In Practice (ISSN No: 0263/841 X) is published 10 times a year by BMJ Publishing Group Ltd, BMA House, Tavistock Square, London WC1H 9JR, UK. The US annual subscription price is \$424. Airfreight and mailing in the USA by agent named Worldnet Shipping Inc., 156-15, 146th Avenue, 2nd Floor, Jamaica, NY 11434, USA. Periodicals postage paid at Jamaica NY 11431. US Postmaster: Send address changes to In Practice, Worldnet Shipping Inc., 156-15, 146th Avenue, 2nd Floor, Jamaica, NY 11434, USA. Subscription records are maintained at BMJ Publishing Group Ltd, BMA House, Tavistock Square, London WC1H 9JR, UK. Air Business Ltd is acting as our mailing agent.



**Diseases affecting the nasal planum and footpads of dogs, p 203**



**Identifying common equine cardiac murmurs, p 222**



**Being a veterinary witness in a criminal case, p 233**

## Clinical Practice

### Exotics

- 194** Chelonian haematology  
1. Collection and handling of samples  
David Perpiñán

### Companion Animals

- 203** Skin diseases affecting the nasal planum and footpads of dogs  
Jon Hardy

### Farm Animals

- 214** Decision making in large animal surgery  
Gayle Hallowell

### Equine

- 222** Identification of common equine cardiac murmurs  
Rachel Jago, John Keen

## Practice Management

### Animal Welfare

- 233** Dealing with possible criminal cases: witness work  
James Yeates

### Everyday Ethics

- 238** Taking a full lunch break  
**239** Euthanasing treatable patients

### A Practitioner Ponders

- 240** Rome was not built in a day

## Vet Record Careers

Be the first to apply for vacancies with our new jobs app

### Features include



**Apply instantly**

Login or register and submit your application in just a few clicks



**Instant alerts**

Get notified when a job matches your criteria



**Short list**

Save your jobs and apply later with our shortlist feature

Free download available now in the app store

