

IN PRACTICE is published by BMJ on behalf of the British Veterinary Association. It is published 10 times a year.

Articles are commissioned and written in the form of 'opinionated reviews'. All clinical articles are peer-reviewed.

Clinical practice editorial board

Stephen Baines, Aiden Foster, Gareth Hateley, Mark Hillyer, Ellie Mardell, Jelena Ristic

Practice management advisory group

Nick Blayney, Rita Dingwall, Peter Gripper, Ewan McNeill

Veterinary Editor-in-Chief: Alexander Trees

Editor: Adele Waters

Managing Editor: Suzanne Jarvis

Associate Editor: Laura Honey

Editorial staff: Kristy Ebanks

All communications for the editorial department should be addressed to:
The Editor *In Practice*, BMJ, BMA House, Tavistock Square, London WC1H 9JR, UK

T: +44 (0)20 7387 4409

F: +44 (0)20 7383 6418

E: inpractice@bva-edit.co.uk

Annual subscriptions

Individual: Print and online £252, Online only £206.

For details of US\$, Euro and institutional subscription rates, please visit inpractice.bvapublications.com/site/about/Subslanding.xhtml

Subscription requests should be sent to: Customer Services, BMJ, BMA House, Tavistock Square, London WC1H 9JR, UK
T: +44 (0)20 7383 6270, F: +44 (0)20 7383 6402, E: support@bmjgroup.com

Advertising

Display advertisement queries should be directed to: Kevan Bowen, T: +44 (0)7768 880410, E: kbowen@bmjgroup.com

In Practice is published by BMJ Publishing Group Ltd (BMJ), a wholly owned subsidiary of the British Medical Association, on behalf of the British Veterinary Association (BVA).

In Practice follows guidelines on editorial independence produced by the World Association of Medical Editors and the code on good publication practice of the Committee on Publication Ethics.

In Practice is intended for veterinary professionals and is provided without warranty, express or implied. Statements in the journal are the responsibility of their authors and advertisers and not authors' institutions, BMJ, the BVA or the BMA unless otherwise specified or determined by law. Acceptance of advertising does not imply endorsement.

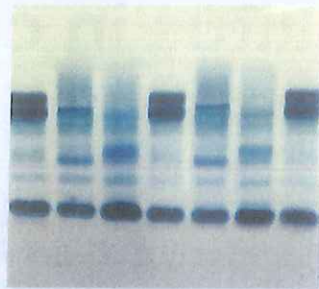
To the fullest extent permitted by law, BMJ and the BVA shall not be liable for any loss, injury or damage resulting from the use of *In Practice* or any information in it whether based on contract, tort, or otherwise. Readers are strongly advised to verify any information they choose to rely on.

Copyright ©2018 British Veterinary Association

All rights reserved; no part of this publication may be reproduced, stored in a retrieval system, or transmitted in any form or by any means, electronic, mechanical, photocopying, recording, or otherwise without prior permission.

In Practice is published by BMJ Publishing Group Ltd, and printed in the UK on acid-free paper from sustainable forests by Warners Midlands, Bourne, UK.

In Practice (ISSN No. 0263-7641 X) is published 10 times a year by BMJ Publishing Group Ltd, BMA House, Tavistock Square, London WC1H 9JR, UK. The US annual subscription price is \$424. Airfreight and mailing in the USA by agent named Worldnet Shipping Inc., 156-15, 146th Avenue, 2nd Floor, Jamaica, NY 11434, USA. Periodicals postage paid at Jamaica NY 11431. US Postmaster: Send address changes to *In Practice*, Worldnet Shipping Inc., 156-15, 146th Avenue, 2nd Floor, Jamaica, NY 11434, USA. Subscription records are maintained at BMJ Publishing Group Ltd, BMA House, Tavistock Square, London WC1H 9JR, UK. Air Business Ltd is acting as our mailing agent.



How to interpret protein electrophoresis, p 183



Diagnosing and treating eosinophilic keratitis in horses, p 204



Dealing with a case of cleft palate in boxer puppies, p 214

Clinical Practice

Companion Animals

- 170** Diabetes mellitus in cats
Martha Cannon

Diagnostics

- 183** Interpreting protein electrophoresis in practice
Niki Skeldon

Farm Animals

- 195** Interpretation and visualisation of data from dairy herds
Kristof Hermans, Geert Opsomer, Willem Waegeman, Sander Moerman, Jenne De Koster, Mieke Van Eetvelde, Bonifacius Van Ranst, Miel Hostens

Equine

- 204** Eosinophilic keratitis in horses
Claudia Hartley

Practice Management

Practice Standards

- 210** Preparing for the Practice Standards Scheme medicines assessment: part 1
Pam Mosedale

Everyday Ethics

- 214** Cleft palate in boxer puppies
215 Slipped disc and dyspnoea in a French bulldog

A Practitioner Ponders

- 216** Making a pig's ear of things



VetRecord
Careers

Sign up for job alerts today
vetrecordcareers.com